

FINCH TREE



FINCH TREE

Fundraising Trees, Sculpture & Plaques
Produced by

METALLIC GARDEN™

111 Marlborough Avenue
Kingston upon Hull
East Yorkshire HU5 3JU

For friendly advice, information & orders
Contact Bronwen & Gary

tel: 0044 (0)1482 342511

email: info@metallicgarden.co.uk

Visit our dedicated website
for further information on the
Finch Tree® range of products

www.finchtree.co.uk



Finch Tree®

FINCH TREE[®]

We design and produce a unique range of engravable plaques and fundraising tree sculptures, all made here in the UK.

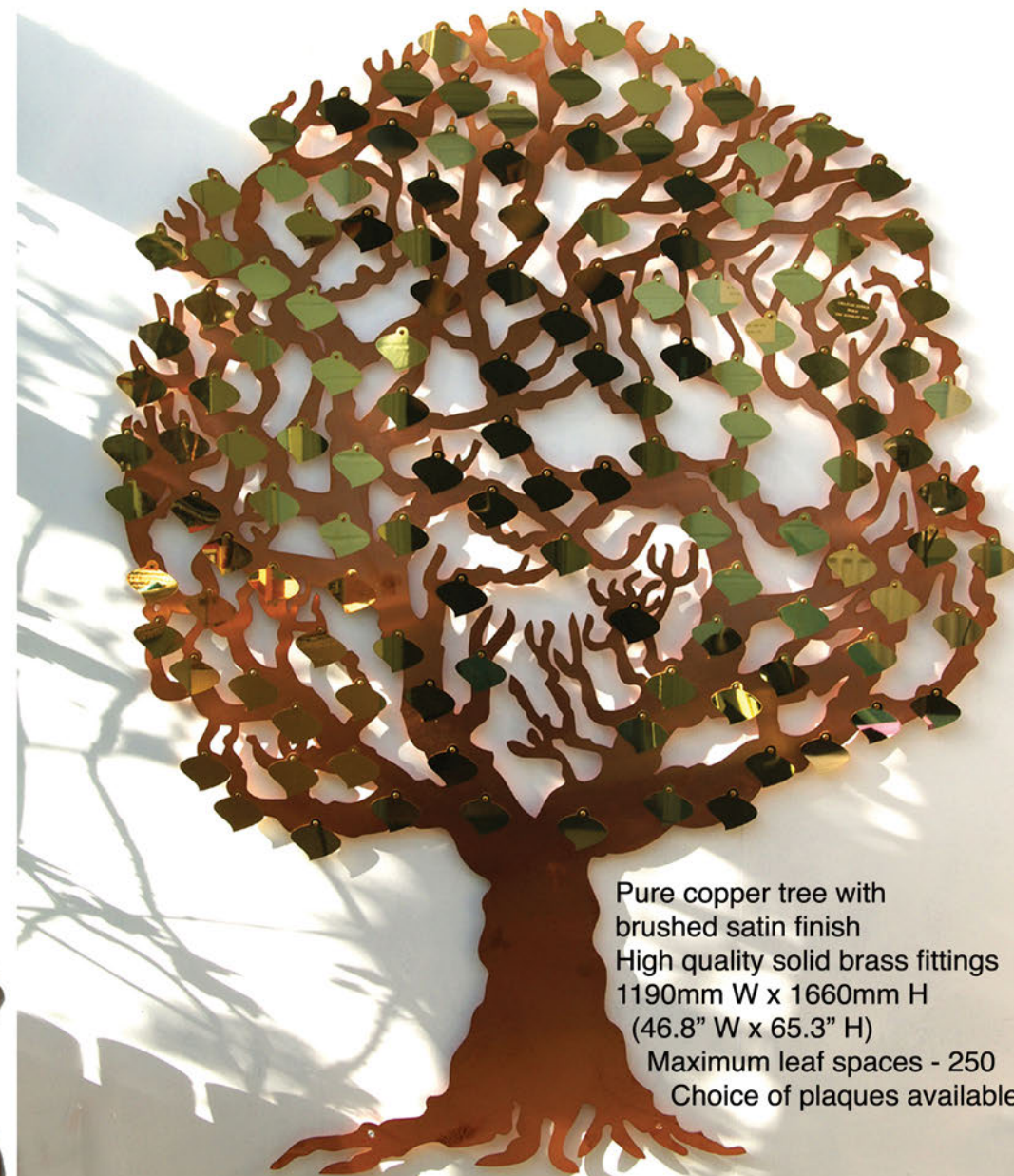
Our plaques can be used for all sorts of projects, indoors or out. You can fix them to any surface, walls, benches, doors etc. Perfect for signs, gifts and donor recognition projects.

"What a beautiful way to raise funds and say thank you to your supporters".

A choice of leaf plaques are available for our trees, in a selection of colours. These can be used together with the bird and butterfly plaques to mark different levels of donation.



LOVE TREE

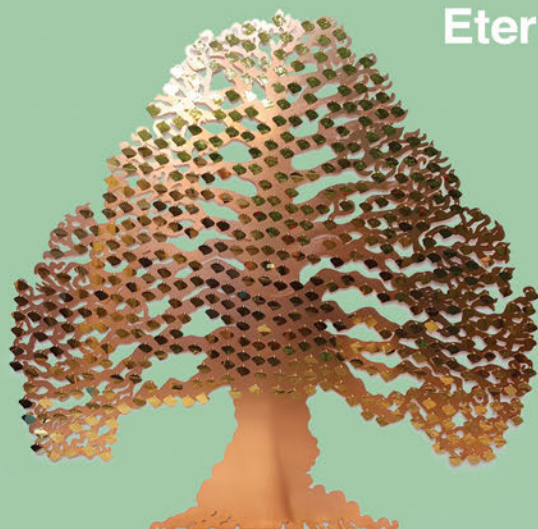


Pure copper tree with
brushed satin finish
High quality solid brass fittings
1190mm W x 1660mm H
(46.8" W x 65.3" H)
Maximum leaf spaces - 250
Choice of plaques available



Love Tree

A plaque is received in return for a donation or contribution. The plaque can be engraved with a name or message to mark a memorable event.



Eternal Tree

The plaques can be displayed for a set period of time, before being returned as a lasting and touching memento. This process can be repeated indefinitely to provide a perpetual source of income.



Windswept Tree

Alternatively the plaques can remain on the tree permanently.

Memory Tree

Suitable for any organisation
Wedding Venues
Hospitals, Schools
Charities, Hospices
Wildlife Sanctuaries
Museums & Gardens



Hope Tree

Fundraising Tree
Tree of Fame, Memorial
Donation Recognition
Births, Marriages
Achievement
Commemoration
and Remembrance



Giving Tree

Made to last!
Constructed from high
quality copper and brass
Suitable for both indoor
and outdoor use



Fruit Tree

New design to the
Finch Tree range.
Displays apple
& pear plaques





FILIGREE HEART

The Filigree Heart display board comes with a choice of plaques. Displayed here with the brass bird plaques, surrounded by large engravable flying bird plaques.

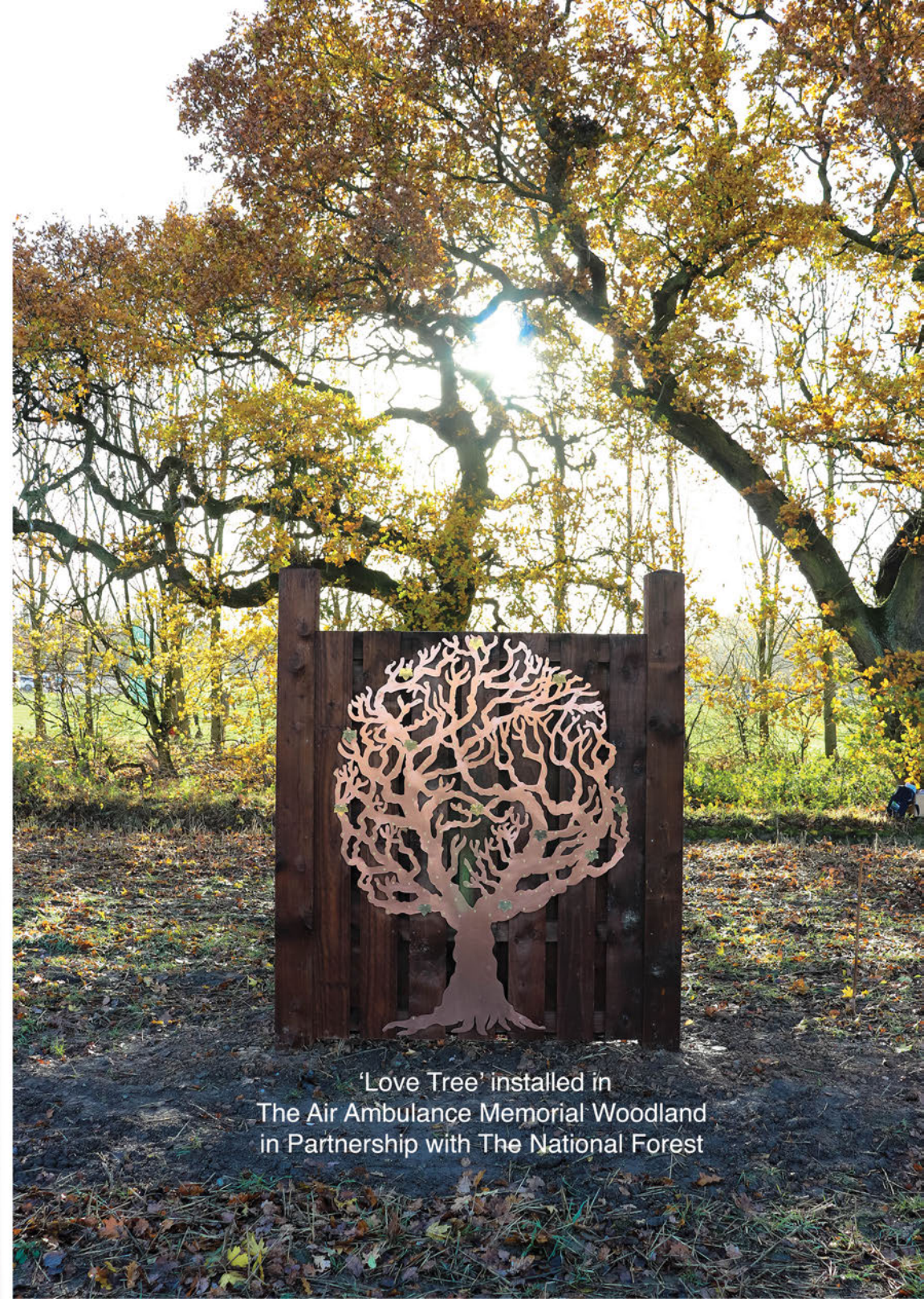
ETERNAL TREE



Pure copper tree with a brushed satin finish
High quality solid brass fittings
2123mm Wide x 2134mm High (83.6" W x 84" H)
Maximum leaf spaces - 500
Choice of plaques available

Parrot Plaques

A commission for the
Bournemouth Parks
Foundation

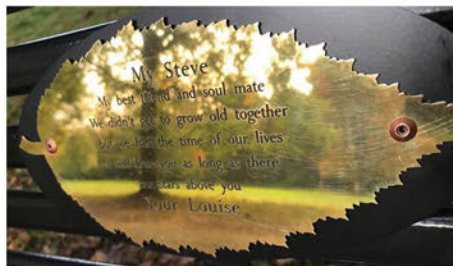
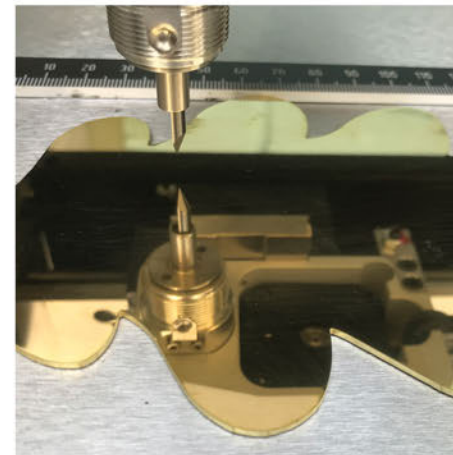


'Love Tree' installed in
The Air Ambulance Memorial Woodland
in Partnership with The National Forest

ENGRAVED PLAQUES

A range of original designs made from high quality metals.

Free design service available. Please ask for details.

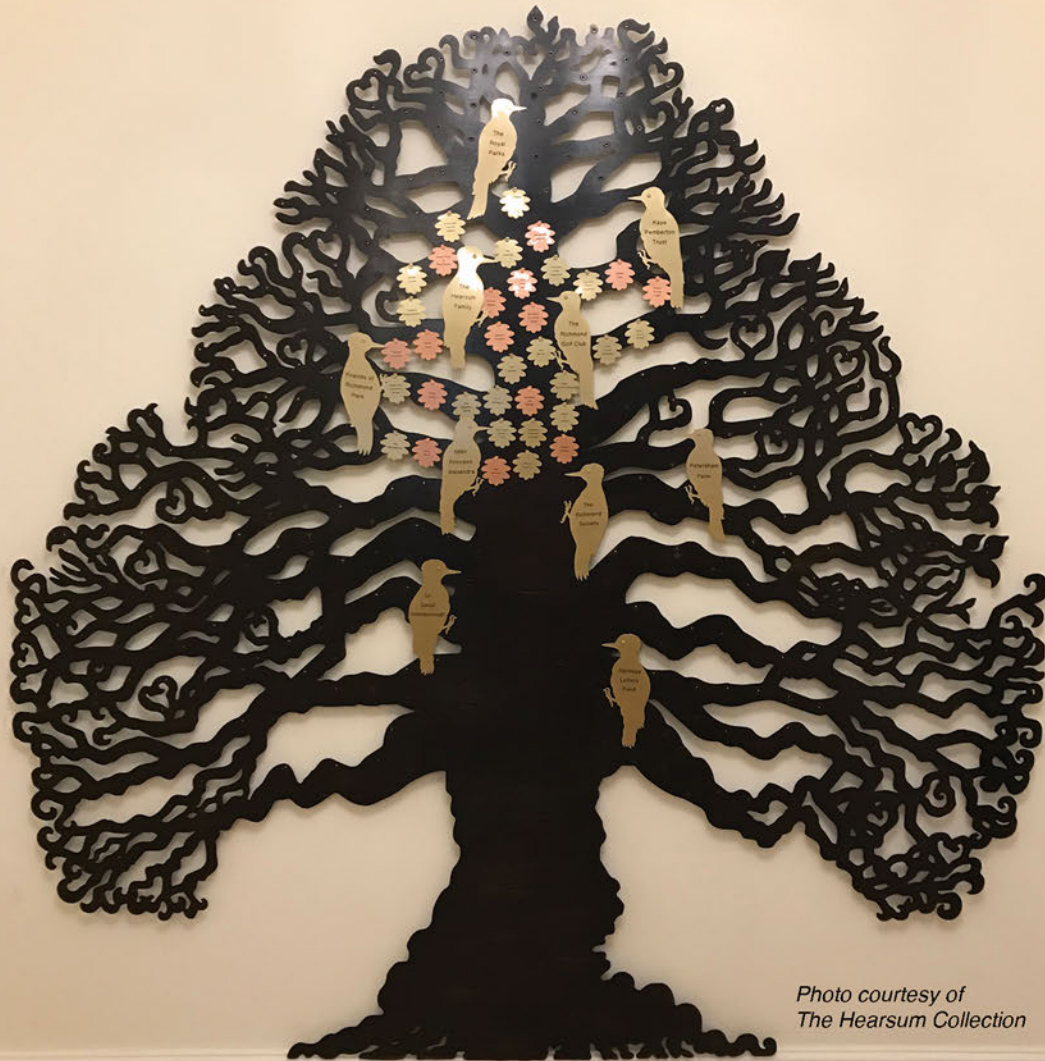


Eternal Tree

With Engraved Woodpecker & Oak Leaf Plaques

Pembroke Lodge, Richmond Park

Our work can be seen in public spaces across the UK
Please contact us for more details



*Photo courtesy of
The Hearsum Collection*

Cumbria Wildlife Trust Foulshaw Moss Nature Reserve

Engraved Birch and Oak leaf plaques attached to hand rails



Image courtesy of Cumbria Wildlife Trust